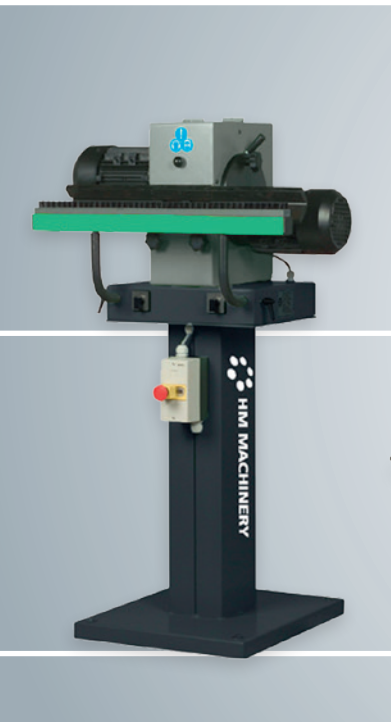


# Cutting-edge technology for grinding, polishing, deburring and pipe notching inspired by HM Machinery



- Motor-brakes as standard
- Simple and practical operation
- Easy machine adjustment
- Quick belt or wheel change
- 5-year motor guarantee
- Powerful dust extraction units
- Highest levels of machine safety



- member of the strong SCANTOOL GROUP



**HM MACHINERY**  
Cutting-Edge Technology



## HM Belt Grinders for the Metalworking Industry

The TAS range of belt grinders, are extremely efficient, high quality machines designed to meet the toughest demands and conditions of today's workplace, in addition to meeting the strictest environmental and safety regulations and requirements.

Models are available as standard, with or without a powerful built-in 2-point dust extraction system. All TAS machines are equipped with a powerful motor supported with a 5 year motor guarantee. Standard equipment also includes; a motor-brake, separate emergency stop, tool free belt change, angle-adjustable tool rest, a flat

top grinding surface, which can be tilted for different working positions, and a large adjustable eye-protection shield.

The TAS range of belt grinders provide fast & effective grinding of all types of metals, and allow for the retro-fitting of our optional pipe notching and centerless grinding equipment.

All machines are manufactured from the highest grades of materials and are powder coated to provide one of the best and most resilient finishes against rust and scratches. The heavy fabricated construction ensures that machines remain vibration free, whilst generating low levels of noise.



**HM TAS 75**  
Abrasive Belt  
- 75 x 2000 mm

**HM TAS 150**  
Abrasive Belt  
- 150 x 2000 mm



**HM TAS 75X**  
With Extraction  
Abrasive Belt - 75 x 2000 mm

**HM TAS 150X**  
With Extraction  
Abrasive Belt - 150 x 2000 mm



*Optional: Cyclone Filtration Unit for the more effective collection of grinding dust. Working either in conjunction with machines fitted with dust extraction, or central workshop extraction systems. Providing the highest levels of dust collection & filtration at all times.*

## Product specifications

Belt grinders	Belt length mm	Standard voltage	Standard motor	Belt speed m/sec	Grind surface mm	Exhaust m <sup>3</sup> /h
HM TAS 75 / 75X	75 x 2000	3 x 400 V	4.1 HP	30	620	-- / 630
HM TAS 150 / 150X	150 x 2000	3 x 400 V	4.8 HP	30	620	-- / 630
Floor grinders	Belt length mm	Standard voltage	Standard motor	Belt speed m/sec	Grind surface mm	Exhaust m <sup>3</sup> /h
HM TAS 75FG	75 x 2000	3 x 400 V	5.5 HP	34	--	--
HM TAS 150FG	150 x 2000	3 x 400 V	7.5 HP	34	--	--
Pipe grinders	Belt length mm	Standard voltage	Standard motor	Belt speed m/sec	Pipe capacity mm	Exhaust m <sup>3</sup> /h
HM TAS 75CG / CGX	75 x 2000	3 x 400 V	4.1 HP	30	Ø 20 - 100	-- / 630
HM TAS 75CGC	75 x 2000	3 x 400 V	4.1 / 4.8 HP	15 / 30	Ø 6 - 100	--
Deburring	Steel brush mm	Flat wheel	Standard voltage	Standard motor	RPM/sec	Exhaust m <sup>3</sup> /h
HM ZP 45 / 45X	250 x 45 x 100 Ø	-	3 x 400 V	3.0 / 4.0 HP	1400 / 2800	-- / 630
HM ZA 250 / 250X	-	250 x 50 x 70 Ø	3 x 400 V	2 x 0.75 HP	2800	-- / 630

## HM Centreless Grinders

HM TAS 75 CG/CGX are machines fitted with our CG centerless attachment and provide an ideal solution for grinding and polishing most types of pipe or tubes. The CG attachment is mounted at the rear-end of the belt grinder which means that the machine can still be used for normal grinding operations at the front-end, and on the top flat grinding surfaces.

HM TAS 75CGC centreless grinding and polishing machine is mounted with our special CGC wet cooling centreless attachment at the front-end. The machine has two-speed motor and automatic feeding unit for pipe and tubes. Because of our specially designed cooling system, it is ideal for longer work-pieces, and also stainless steel too.

Both the CG and CGC attachments can also be bought separately as an option for existing TAS 75 machines.



### HM TAS 75CGC

With a 2-speed motor and wet cooling system.  
Grinding and Polishing of tubes,  
Ø 6 - 100 mm



### HM TAS 75CG / CGX

Grinding and Polishing of tubes, Ø 20 - 100 mm



### HM TAS 75FG / 150FG

Mobile Belt Floor Grinder,  
Particularly suited for the Marine,  
Off-Shore & Wind-Turbine  
manufacturing sectors.



### HM ZP 45 / HM ZA 250

ZP 45 Tube-End Deburring Machine.

ZA 250 Sheet Deburring Machine for sheets of material of up to 10 mm thickness. Both machines are available with or without separately powered dust extraction systems.



All HM machines are CE-marked according to the official guidelines of the EU commission.

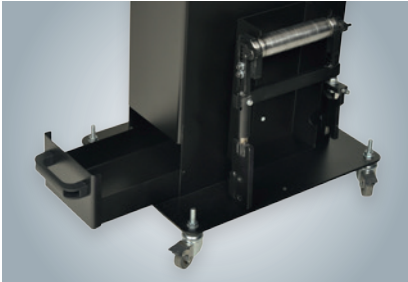


## HM Pipe Notchers

HM TAS 75RB/RBX & 150RB/RBX models are fitted as standard with our Pipe Notching Equipment. Available with or without 2-point separately powered dust extraction, these machines offer effective notch-grinding for all types of pipe/tube, box-section, and solid bar, from diameters of 17 mm to 100 mm, and at angles of up to 60°. The RB/RBX models however, are more than just efficient, dedicated pipe notching machines... In just a few minutes, they can be easily converted back into a standard belt grinder again.

### HM TAS 75RB / 150RB

Pipe Notcher.



Base showing rack for grinding rollers and the integrated spark/chip box.



Vise for pipe and tubes with angle adjustment up to 60°.



### HM TAS 75RBX / 150RBX

Pipe Notcher complete with built-in dust extraction system.

## Product specifications

Pipe notchers	Belt length mm	Standard voltage	Standard motor	Belt speed m/sec	Pipe capacity mm	Exhaust m <sup>3</sup> /h
HM TAS 75RB / RBX	75 x 2250	3 x 400 V	4.1 HP	30	Ø 17 - 100	-- / 630
HM TAS 150RB / RBX	150 x 2250	3 x 400 V	4.8 HP	30	Ø 17 - 100	-- / 630

Also included with the pipe notching equipment; 2000 mm x 75/150 mm abrasive belt, spark/chip collection box, tool rest, and eye protection shield, for conversion back to a belt grinder once pipe-notching has been completed.



Use this QR for more product information

*Sale & distribution:*

**HM MACHINERY**  
 Industrivej 3-9  
 DK-9460 Brovst, Denmark  
 Tel: +45 98 23 60 88  
 Fax: +45 98 23 61 44  
 info@scantool-group.dk

[www.hmmachinery.com](http://www.hmmachinery.com)